

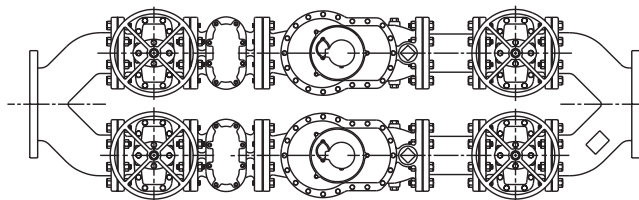
SENSUS METERING SYSTEMS Compound Meters

AWWA Class II – 8" High-Performance Manifold Compound Meter

Size 8" (DN 200mm)



Intelligent Communications Encoder (ICE) Register



8" Manifold Compound Meter (Solid Spool Style Shown)

Description

Application: The 8" SRH Manifold Compound Meter is designed specifically for use in cold water services where flows vary from the very large to the very small. Typical applications are apartment dwellings, office buildings, hotels, schools and smaller manufacturing facilities.

Conformance To Standards: SRH Compound Meters comply with ANSI/AWWA Standard C702 Class II (most recent revision). Each 4" SRH compound meter is performance tested to insure compliance.

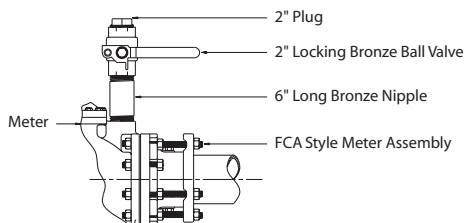
Construction: Each SRH Compound Meter is essentially two meters within a single bronze housing. Low flows are measured through the piston type positive displacement measuring chamber. High flows through the turbine chamber. Flows through the measuring chambers are controlled by a bronze swing action valve. The measurements of the two chambers are coordinated and recorded on a single billing register on each meter.

Coordinator: Each meter has a separate, sealed compartment containing the reduction gearing and over-riding clutches for both chambers in one module. The compartment is oil-filled for long life and maintenance-free operation. Separate change gears for calibrating the measuring chambers are located on top of the module for easy access.

Magnetic Drive Couplings: The motion of the measuring chambers are transferred to the sealed coordinator and single totalizing register through magnetic couplings for each meter. This allows all reduction gearing to be out of the water. Also, each meter's turbine shaft is magnetically suspended, causing it to be essentially weightless in water.

Modular Design: The hermetically sealed register, coordinator module, positive displacement chamber and turbine chamber can all be replaced quickly and easily with the meter assembly in line.

Maintenance: SRH Compound Meters should be tested periodically to insure proper operation. A test plug is conveniently located on top of the maincase for field testing. Factory testing, repair and meter exchange programs are available. An optional installed test outlet assembly is available on each meter.



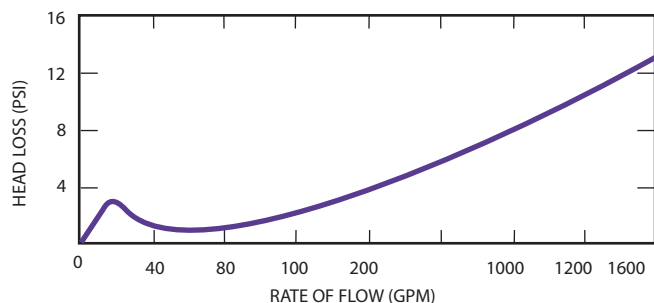
Specifications

SERVICE	Measurement of cold water up to 80°F (27°C), horizontal installations with flow in one direction only.
OPERATING RANGE	16 to 1600 gpm (3.6 to 363 m ³ /h)
ACCURACY (except at crossover)	100% ± 1.5% of actual thruput
ACCURACY AT CROSSOVER	95% minimum
LOW FLOW	95% minimum at 2 gpm (.35 m ³ /h)
PRESSURE LOSS	13.9 psi at 1600 gpm (.96 bar at 363 m ³ /h)
MAXIMUM OPERATING PRESSURE	150 psi (10.34 bar)
FLANGE	8" Round, ANSI Class 125
REGISTER	Hermetically Sealed Direct Reading Register with Low Flow Indicator. Remote reading unit optional.
METER REGISTRATION	1,000,000,000 gallons 1 gallons/sweep hand revolution 100,000,000 cubic feet .1 cubic feet/sweep hand revolution 1,000,000 m ³ .001 m ³ /sweep hand revolution
MATERIALS	Maincase—Bronze Bypass Chamber—Rocksyn® (Bronze optional) Turbine Chamber—Synthetic Polymer (Bronze optional) Piston—Synthetic Polymer Turbine—Polypropylene Valve—Bronze Test Plug—1-1/2" Tapered Pipe Threads (test nipple and valve optional) Trim—Stainless Steel Manifold Yokes—Ductile Iron Spools—Ductile Iron Strainers—Bronze

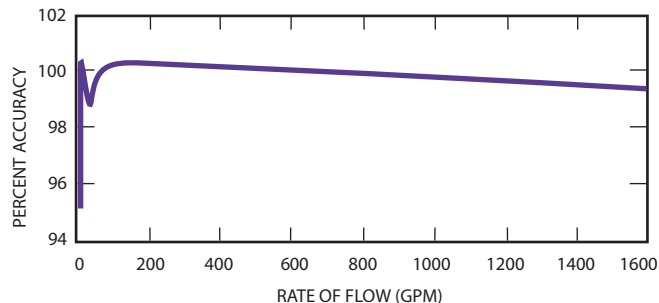
8" High-Performance Manifold Compound Meter

Size 8" (DN 200mm)

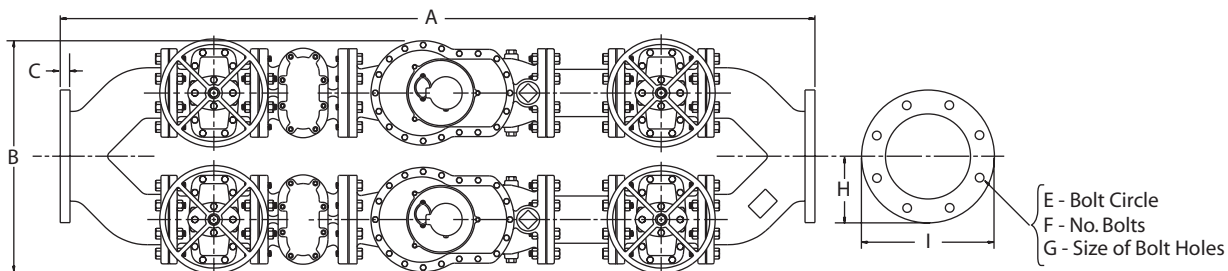
Head Loss Curve



Accuracy Curve

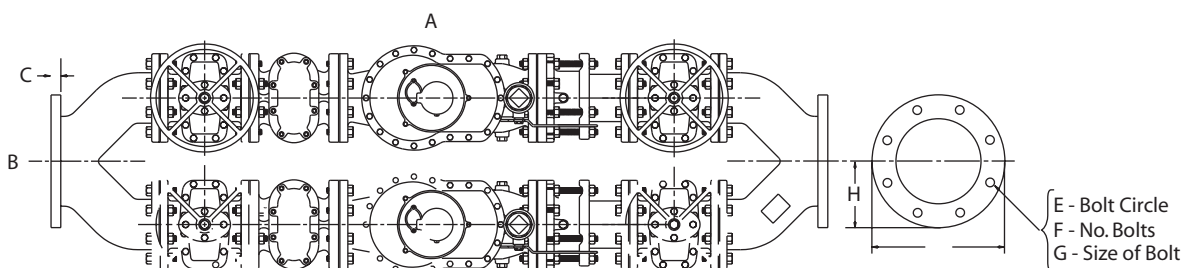


8" Manifold Compound Meter - Solid Spool Style



Meter and Pipe Size	Dimensions									Net Weight	Shipping Weight
	A	B	C	HEIGHT	E	F	G	H	I		
8"	76-3/4"	24-7/8"	7/8"	20"	11-3/4"	8	3/4"	6-3/4"	13-1/2"	1050 lbs.	1150 lbs.
DN 200mm	1950mm	632mm	22mm	508mm	300mm	8	19mm	171mm	243mm	476 kg	522 kg

8" Manifold Compound Meter - Flanged Coupling Adapter Style



Meter and Pipe Size	Dimensions									Net Weight	Shipping Weight
	A	B	C	HEIGHT	E	F	G	H	I		
8"	79"	24-7/8"	7/8"	20"	11-3/4"	8	3/4"	6-3/4"	13-1/2"	1100 lbs.	1200 lbs.
DN 200mm	2007mm	632mm	22mm	508mm	300mm	8	19mm	171mm	243mm	499 kg	544 kg

Installation Instructions: Please see CM-973 latest revision.

AUTHORIZED SENSUS DISTRIBUTOR



P.O. Box 487 • 450 N. Gallatin Avenue
 Uniontown, PA 15401
 1-800-METER-IT • 1-800-638-3748
 Fax: Direct to Factory
 Local: 724-439-7729 • Toll Free: 1-800-888-2403
 www.sensus.com (select "North America Water")
 Email: h2oinfo@sensus.com