

Series "W" Turbo Meters

Model W-120 DR

Bronze Case, Magnetic Drive
Flanged Ends
Size 1-1/2"



Model W-120 DRS

Bronze Case, Magnetic Drive
Integral Strainer
Flanged Ends
Size 1-1/2"



(Shown with optional encoder style register)

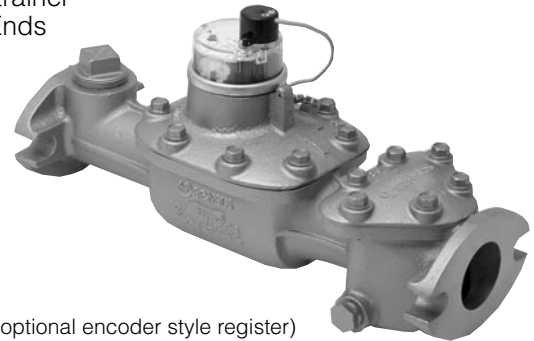
Model W-160 DR

Bronze Case, Magnetic Drive
Flanged or Screwed Ends
Size 2"



Model W-160 DRS

Bronze Case, Magnetic Drive
Integral Strainer
Flanged Ends
Size 2"



(Shown with optional encoder style register)

Model W-350 DR

Bronze Case, Magnetic Drive
Flanged Ends
Size 3"



Model W-350 DRS

Bronze Case, Magnetic Drive
Integral Strainer
Flanged Ends
Size 3"



(Shown with optional encoder style register)

Model 125-W

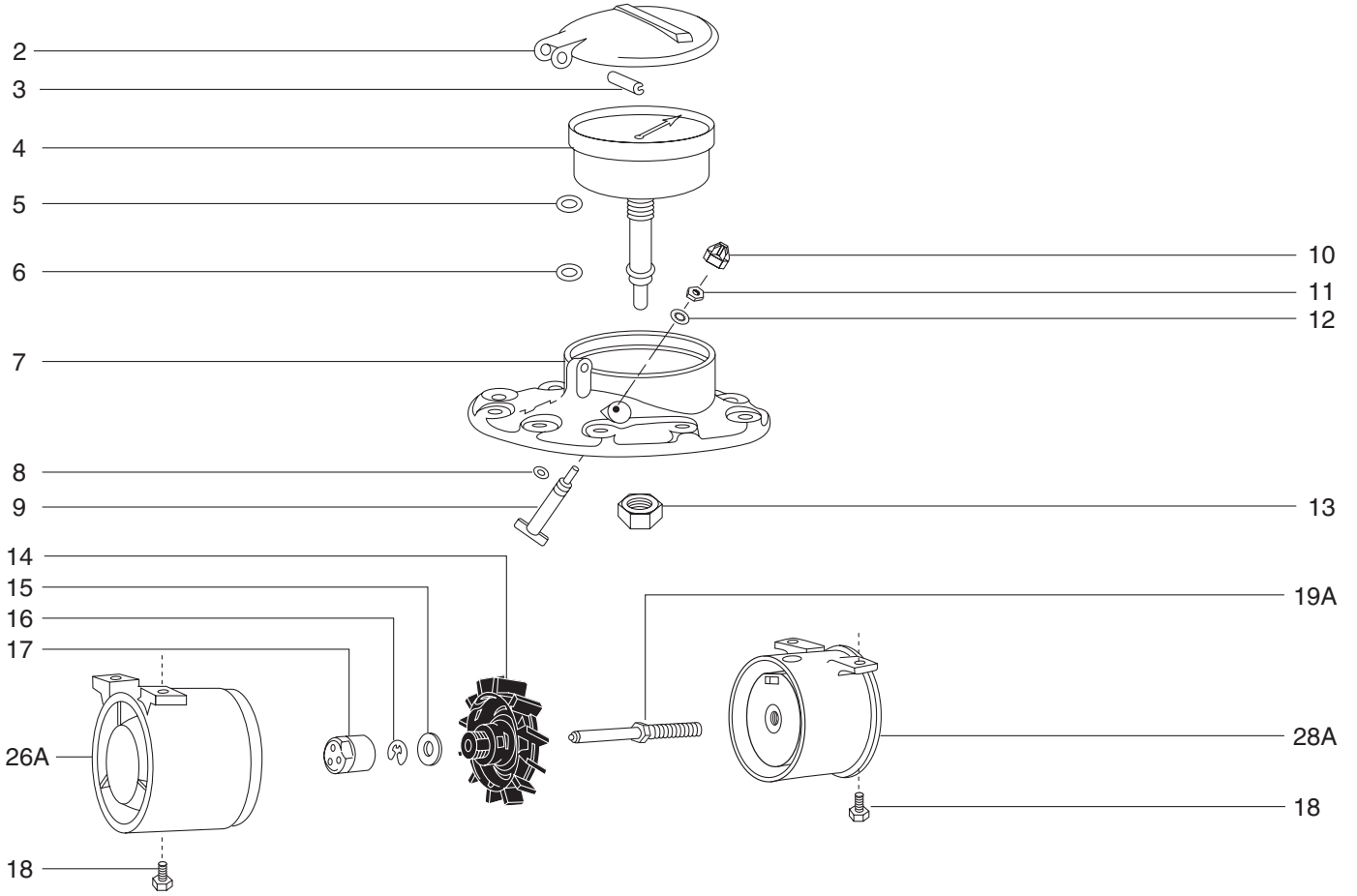
Fire Hydrant Meter
Aluminum Case, Magnetic Drive
Size 3"

(Shown with optional
strainer screen)



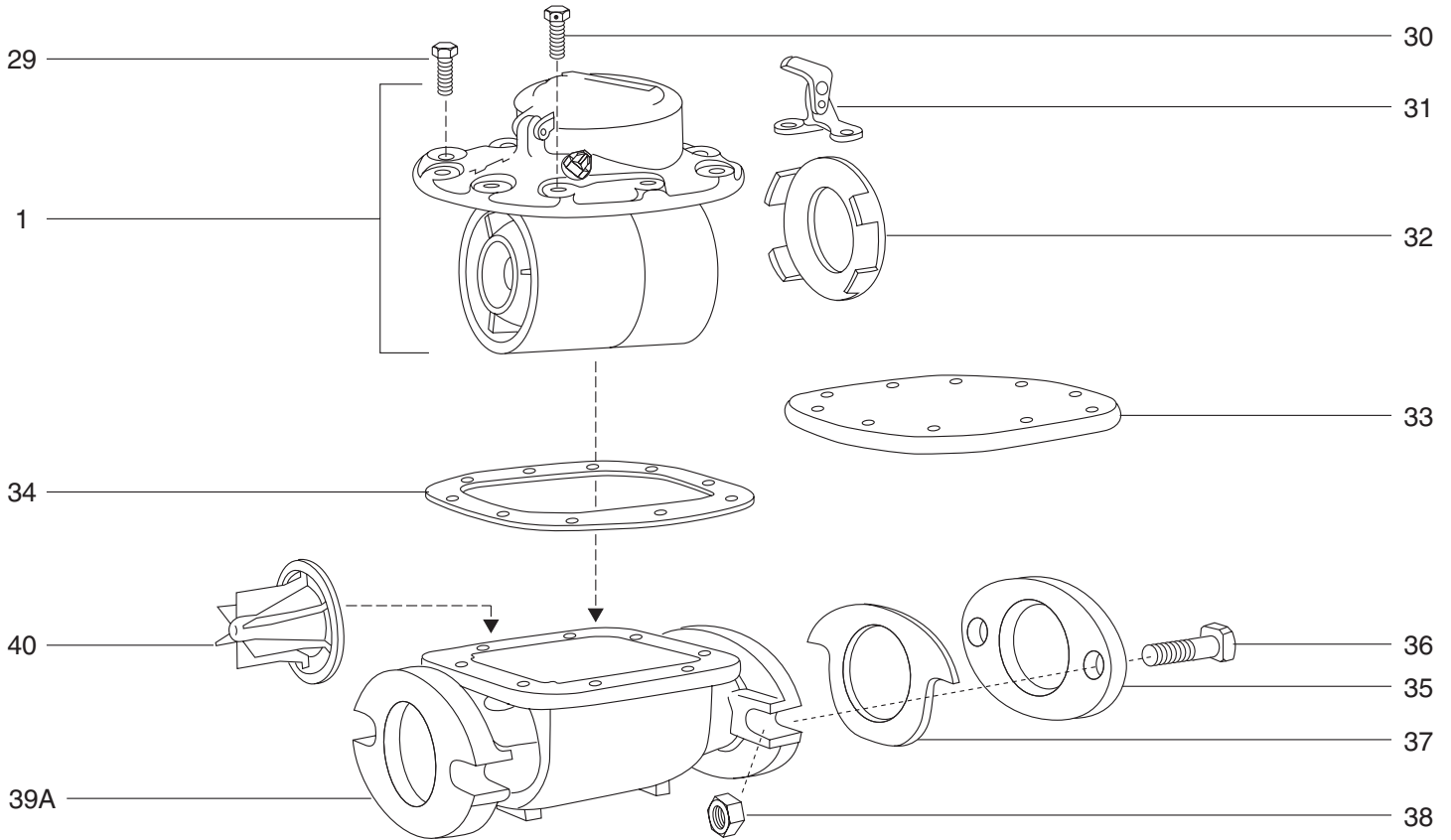
Series "W" Turbo Meters

W-120 DR, W-120 C, W-120 DRS, W-160 DR, W-160 DRS, W-350 DR, W-350 DRS and 125-W Turbo Meter



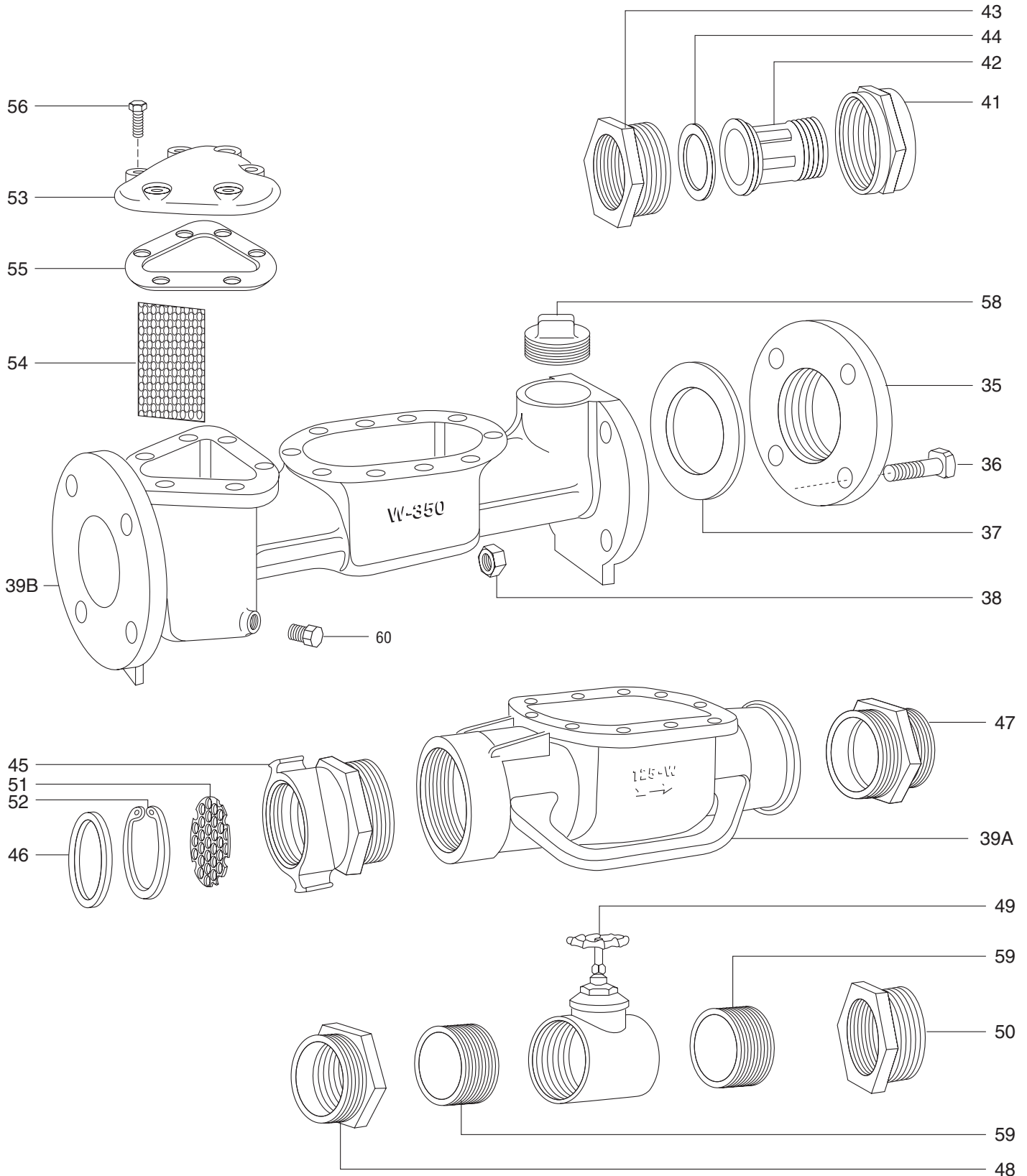
Series "W" Turbo Meters

W-120 DR, W-120 C, W-120 DRS, W-160 DR, W-160 DRS, W-350 DR, W-350 DRS and 125-W Turbo Meter



Series "W" Turbo Meters

W-120 DR, W-120 C, W-120 DRS, W-160 DR, W-160 DRS, W-350 DR, W-350 DRS and 125-W Turbo Meter



Series "W" Turbo Meters

Remote Capable Register (RCR)

ILL. No.	Name of Part
1	Measuring Chamber Complete ①
2	Register Cover—Metal
3	Register Cover—Hinge Pin
4	Sealed Register ②
5	Register Gasket ③
6	Register O-Ring ③
7	Measuring Chamber Cover
8	Adjusting Vane O-Ring
9	Adjusting Vane
10	Adjusting Vane Cap
11	Adjusting Vane Lock Nut
12	Adjusting Vane Lock Washer
13	Register Locking Nut
14	Rotor ④ ⑫
15	Rotor Thrust Spacer
16	Rotor Retainer Ring
17	Rotor Cap
18	Housing Cap Screw
19	Rotor Shaft Upgrade Kit (Discontinued)
19A	Rotor Shaft Self-Adjusting
20	Rotor Shaft O-Ring
21	Face Plate (Plastic) Upgrade Assembly ⑬ ⑭ (Discontinued)
22	Seal Nut O-Ring
23	Rotor Shaft Seal Nut
24	Rotor Shaft Adjusting Nut
25	Face Plate O-Ring
26A	Inlet Housing (Plastic) ⑤
28	Outlet Housing
28A	Outlet Housing with Face Plate Assembly ⑭
29	Main Flange Cap Screw
30	Main Flange Cap Screw (Drilled)
31	Lid Locking Hasp

Accessory Equipment

ILL. No.	Name of Part
32	Flow Restriction Plate
33	Blank Cover Plate
34	Main Flange Gasket
35A	Companion Flange—Cast Iron W-120 W-160 W-350
35B	Companion Flange—Bronze W-120 W-160 W-350
36	Flange Bolt W-120 W-160 W-350
37	Companion Flange Gasket W-120 W-160 W-350
38	Flange Nut W-120 W-160 W-350
39A	Maincase—DR ⑥ ⑩ W-120 W-160 W-350 125-W
39B	Maincase—DRS (with Strainer and Test Plug) ⑩
40	Flow Straightener ⑦
41	Connection Nut
42	Connection Swivel
43	Connection Bushing
44	Connection Gasket ⑧
45A	Hose Coupling—Female Threads ⑨
45B	Hose Coupling—Female Threads w/Internal Strainer ⑨
46	Hose Coupling Gasket
47	3" x 2 1/2" Coupling—Male Threads ⑨
48	3" x 2" Adapter Bushing ⑨
49	2" Gate Valve ⑨
50	2" x 2 1/2" Coupling Male Threads ⑨ ⑩
51	Screen
52	C-Clip
53	Strainer Cover (DRS Only)
54	Strainer Screen (DRS Only)
55	Strainer Gasket (DRS Only)
56	Strainer Cover Cap Screw (DRS Only)
57	Cup Washer (Discontinued)*
58	Test Plug (DRS Only)
59	2" Adapter Nipple ⑨
60	Drain Plug

* Old parts available until stock is depleted.

① Refer to Modernization and Maintenance Plan (MMP) for Measuring Chamber Complete. Must specify registration units.

② Specify registration by letter designation:

A: U.S. Gallons B: Cubic Feet C: Other (Specify)

If original register was 3-3/8" in diameter, specify replacement register with register adapter ring.

③ Parts are included with replacement register.

④ Upon installation of new rotor, accuracy test and calibration adjustment is recommended.

⑤ Inlet Housing and Housing Cover Ring are now a one-piece unit.

⑥ W-160 DR only: Specify spud ends by letter designation:

A: Flanged ends. B: Screwed ends.

⑦ Thermoplastic and older style metal flow straightener is not interchangeable because the maincase is different.

⑧ Standard gasket material is leather; specify if other material is required.

⑨ Fire hose threads are 2-1/2" – 7-1/2" NST threads unless otherwise specified.

⑩ Item 49 (2" Gate Valve) requires items 48, 50 and (2ea)-59.

⑪ Main Case—specify meter model by letter designation.

⑫ On W-350, W-350 DRS, 125-W. For use w/R.E.R. assembly. See tester parts list.

⑬ Includes illustrations 26 and 28A. Must specify meter size.

Series "W" Turbo Meters

Warranty:

Sensus warrants its products only against defects in materials and workmanship. Sensus' liability and customer's exclusive remedy under this warranty or any warranty extends for a period of one (1) year from the date of Sensus' shipment and is expressly limited to repayment of the purchase price, repair or replacement, at Sensus' option, during said period, upon proof satisfactory to Sensus and upon customer's returning and prepaying all charges on such products to factory or warehouse designated by Sensus.

THIS WARRANTY IS MADE EXPRESSLY IN LIEU OF ALL OTHER WARRANTIES; EXPRESS, IMPLIED, OR STATUTORY, WITH RESPECT TO QUALITY, MERCHANTABILITY, OR FITNESS FOR A PARTICULAR PURPOSE.

AUTHORIZED SENSUS DISTRIBUTOR



P.O. Box 487 • 450 N. Gallatin Avenue
Uniontown, PA 15401
1-800-METER-IT • 1-800-638-3748

Fax: Direct to Factory
Local: 724-439-7729 • Toll Free: 1-800-888-2403

www.sensus.com (select "North America Water")

Email: h2oinfo@sensus.com